



West Hanney Then and Now

THE CONTRAST BETWEEN THE PAST AND PRESENT

Presentation details

- ▶ The slides cover a walk round West Hanney in two periods, arranged mostly in matching pairs apart from some of the church:
 - ▶ The first of the pairs are mostly from before the Second World War and many of these views are from the post cards that were then available from a number of companies.
 - ▶ The second are virtually all post – Millennium and try to match the views of the first set where possible. They are all private photos. The majority of this group were taken in 2017 but a few are approximately five years earlier.
 - ▶ The journey starts at the church and follows Church Street and Main Street to the Green and School Road with a brief detour into Winter Lane. These were the areas that attracted the post card sellers so newer building is largely omitted.



WEST HANNEY CHURCH 114025











WEST HANNEY















WEST HANNEY





































WEST HAMNEY 1871





WEST HANNEY 1868.









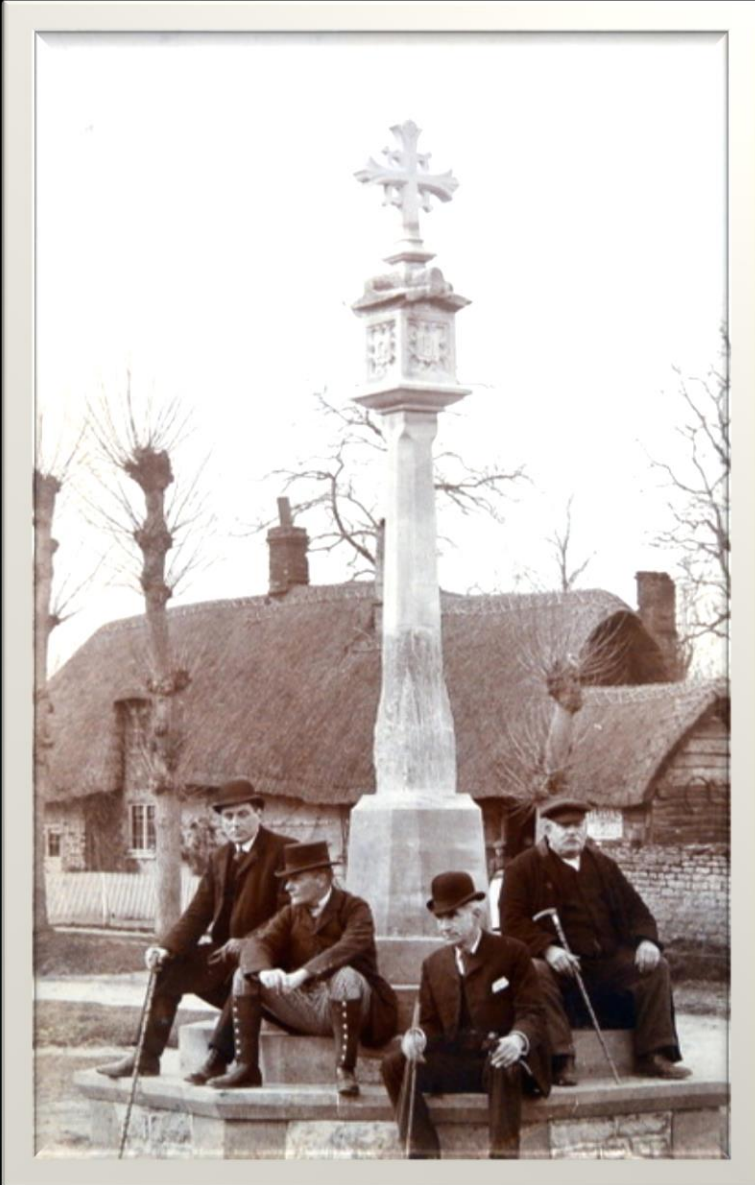














Winter Lane, West Hanney









