

Starting Places

Salter's Steamers

Oxford Canal

Port Meadow

Thames Journeys

and

The Royal Academy 2012 Exhibition



ORIGINAL THAMESHEAD SCULPTURE NOW AT LECHLADE LOCK

Paul Sandby at Nuneham 1760



Barge exiting arcadia for Oxford



Purpose

- To use images as a starting place for a wide exploration of economic and social activity on the Upper Thames
- To progress upstream and explore tributaries as they occur
- To shine a little light onto the 'Dark' Tamesis
- To discover fresh images of the Thames

Later Chronology

- **Roman**
- **Viking**
- **Bridge building 1100 -1250**
- **Mills, Flashes and Weirs**
- **Decline and the Commission**
- **Thames Conservancy and Lock building**
- **Canal trade added**
- **Railway and road competition**
- **Sport and Leisure**

Romans upriver?



WAS IT LIKE THIS?
GERMAN REPLICA
RIVER GALLEY



Or Vikings?

**Thames 'Shout' model at
Henley River Museum and
Viking Longship in Oslo**



Image or object?



RECONSTRUCTED ARTWORK OF WALLINGFORD CASTLE AND REMAINS LEFT AFTER THE CIVIL WAR. COMPLEMENTARY UNDERSTANDING?

Industry at Wallingford

**RECONSTRUCTING
THE BRIDGE. AN
ESSAY IN HISTORY
AND INDUSTRIAL
ARCHAEOLOGY BY
HAVELL.**



Benson afternoon



Albert
Chevallier
Tayleur

The only hill fort

PAUL NASH AT
WITTENHAM
CLUMPS



Shillingford Ferry

J.T.Serres
near
Dorchester
about 1820



Thames Barges at Chiswick by Taunt c. 1880



The first punt? Henley River Museum



Wilts and Berks Canal at Abingdon



Canal Entrance c.1860



Vicat
Cole
1833-93

Abingdon 1865



Henry Taunt

Havell's view of Abingdon 1812



Picturesque Weeds

William Turner
of Oxford at
Nuneham 1860



Meadows and Folly Bridge Wharf

J.M.W. Turner
C 1830



And more weeds at Godstow

Taunt
1890



Mills, Weirs or Hazards

Iffley Mill
and flash
William
Turner

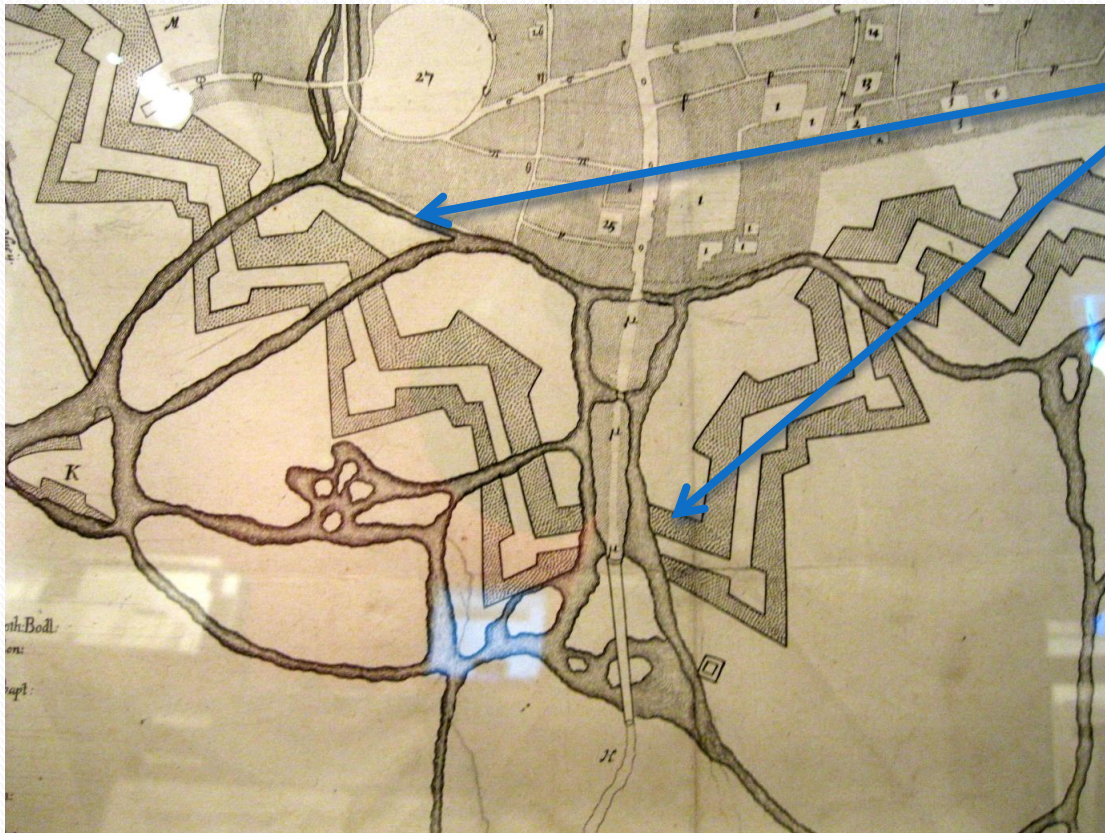


Oxford Civil War Defences 1648

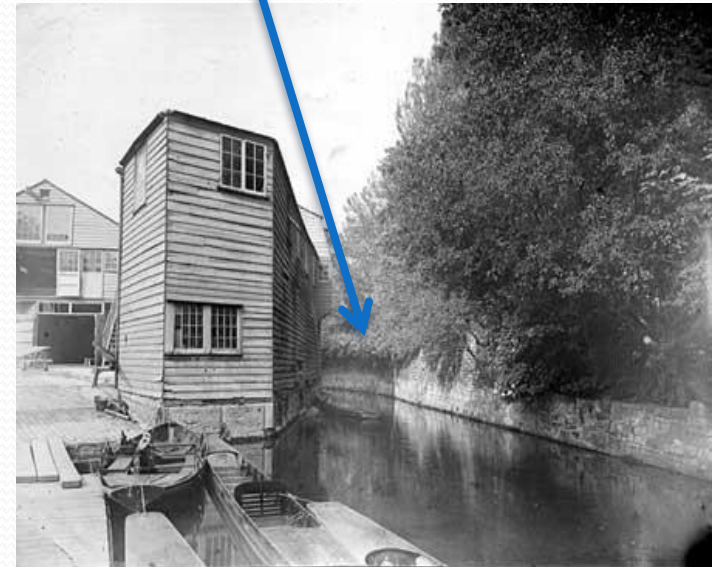
Anthony
Wood
1674



Folly Bridge 1642 and 1890



Trill Mill Stream



Hythe Bridge and Oxford Canal



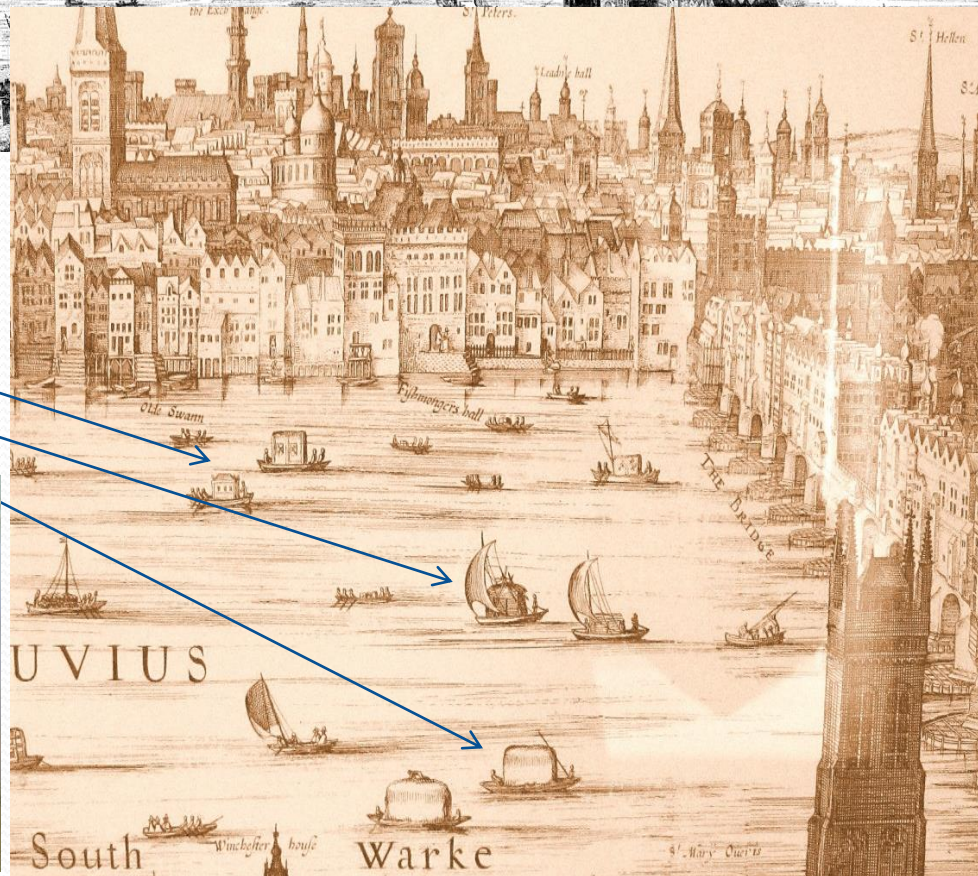
Michelangelo
Rooker 1746-
1801



Visscher Panorama 1612



Water Taxis Hay Barges



'High' Bridge 1822

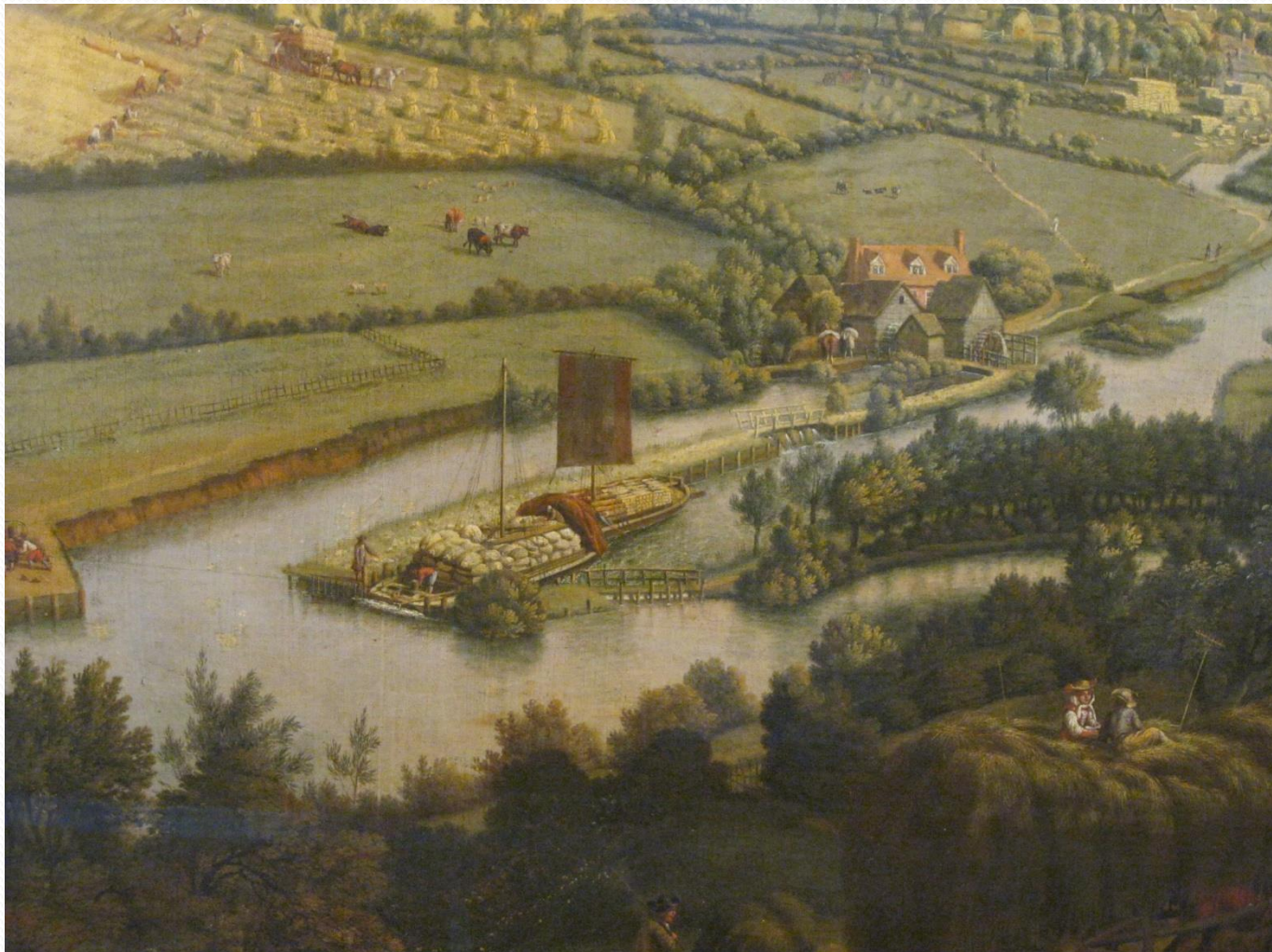


Flash weir in action – Marsh Lock

Jan Siberechts
1627-1703
[Detail]
Henley river
museum



Marsh Lock Henley - Flash Detail



Opening the Flash

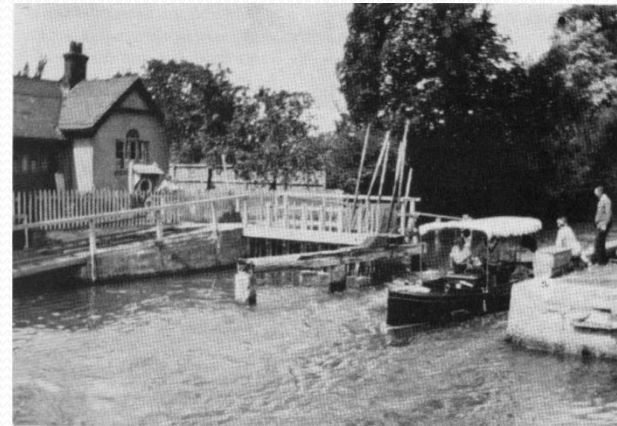


WEIR, WITH MOVABLE BRIDGE.

Open Flash near Eynsham c.1900



Medley Weir and Flash 1920



Town and Country Wharves



Tributaries

Cherwell
William
Turner
1840?



Lechlade 1815



Copyright Motco 1999

The Highworth Turnpike at Lechlade 1880



Lechlade Park End Wharf



Lechlade wharves 2012



Buscot Lock Traffic April 1801-8

Year	Down	Tonnage	Up	Tonnage
1801	18	1665	9	480
1802	16	1465	5	150
1803	14	1070	2	100
1804	10	980	1	110
1805	7	700	2	140
1806	13	820	2	80
1807	7	620	3	150
1808	10	1000	3	125

Near Kempford c 1870



Industrial Soot from Hinksey



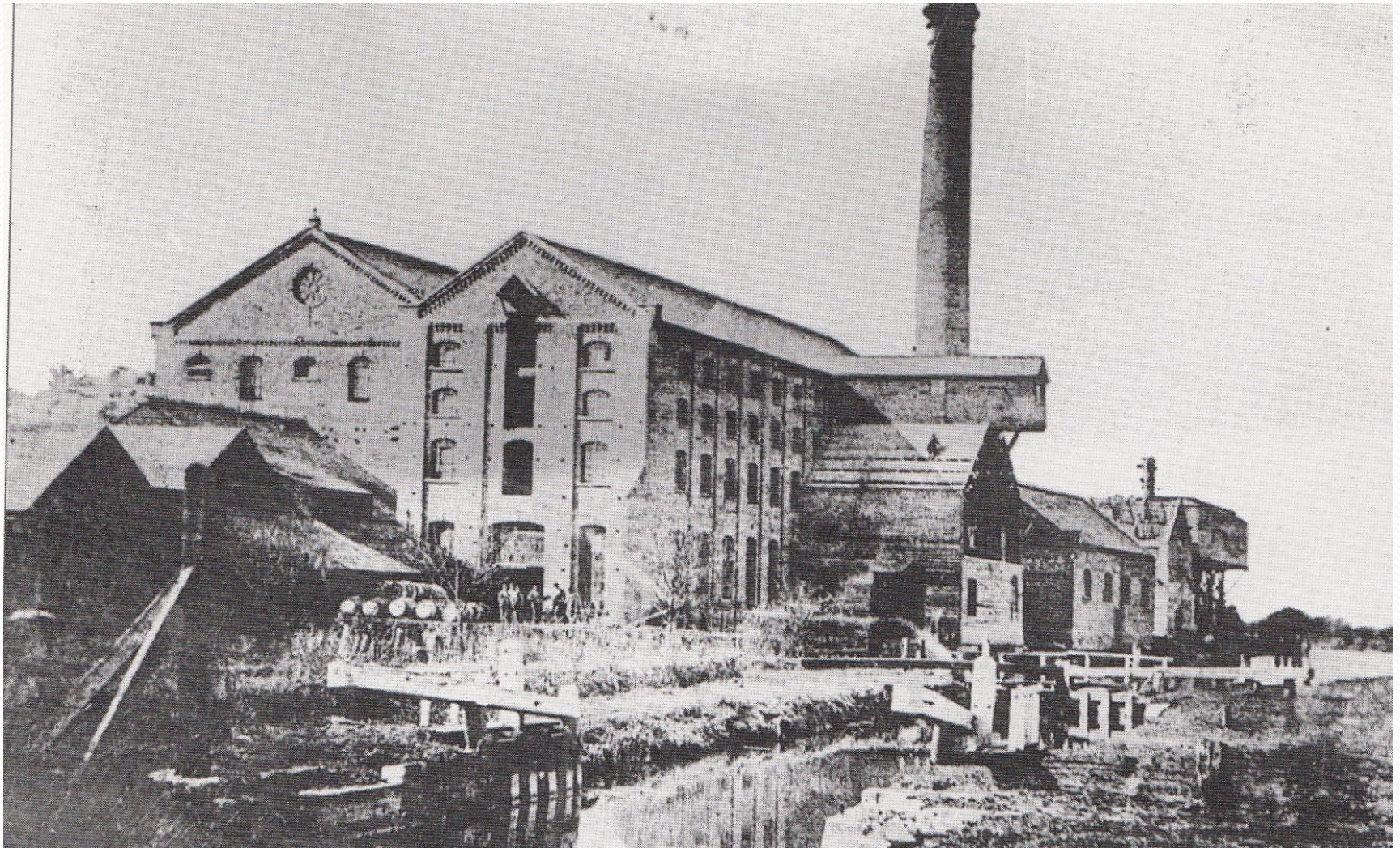
J. Macmillan

A. Le Roy

VIEW OF OXFORD, FROM THE MEADOWS NEAR THE GAS-WORKS.

Published Nov 1846, by J. H. Patten, Oxford & York, Printers in London & Edinburgh.

Buscot Distillery and Lock?



Salter's Navy first cruiser 1900 & 2010

Salters used *Alaska*
from 1888 until 1941 –
it has recently been
restored



Still Steaming to Abingdon



Romantic or accurate?



**1387 The First Battle of
Radcot Bridge and the flight
of baron de Vere**



Radcot today – little changed?



